



SMCD3G-BIZ

DOCSIS 3.0 Commercial Cable Modem Gateway



OVERVIEW

The SMCD3G is a powerful and flexible DOCSIS 3.0 gateway providing high-speed Internet access for commercial services including teleworker, hospitality and other SMB applications. Taking advantage of DOCSIS 3.0 technology, the gateway operates on up to four downstream and/or upstream bonded channels supporting speeds of up to 160Mbps downstream and 120Mbps upstream. Installation is quick and easy with support for up to six blocks of Static IPs in conjunction with RIP v1/v2. In addition, the SMCD3G offers numerous remote management options, provisioning via GUI, CLI or downloadable config file, advanced troubleshooting capabilities, Stateful Packet Inspection (SPI) firewall, PPTP, L2TP, and IPsec VPN termination, Universal Plug and Play (UPnP), and DOCSIS Quality of Service (QoS).

KEY FEATURES

Functions

- Fully interoperable with all DOCSIS Cable Networks
- Compatibility with DOCSIS 1.1, 1.0, 2.0,3.0
- IPV4 and IPV6 capable
- Gigabit Ethernet port ensures maximum speed is delivered to the customer's CPE

Easy Installation

- Downloadable configuration files allow for easy quick installation
- GUI displays helpful troubleshooting information
- CLI enables advanced troubleshooting
- Comprehensive LED display for easy installation and monitoring

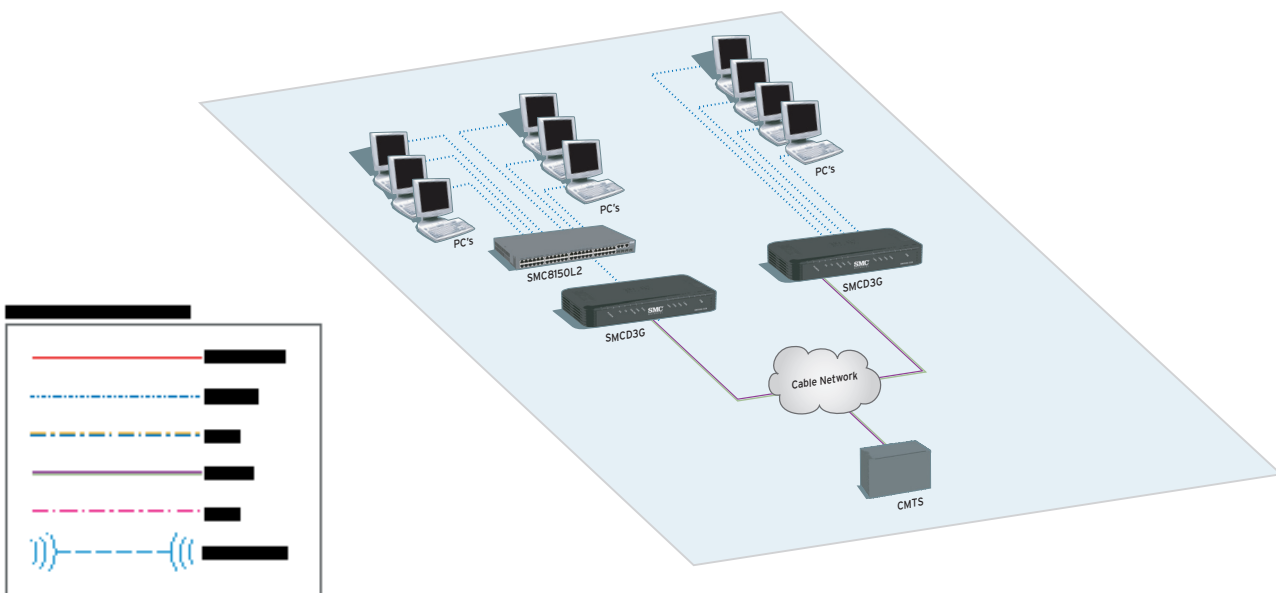
Advance Business Class Features

- RIPv1/v2 enables static IP addressing
- Built in DHCP server allows for dynamic assignment of the static IP block
- Full featured Command Line Interface (CLI)
- Advanced SPI firewall
- VPN termination

System Management

- TELNET
- TFTP
- TACACS + and Radius management authentication for enhanced security
- SNMP v1/2c/3

APPLICATION DIAGRAM



TECH SPECS - SMCD3G-BIZ

COMPATIBILITY

- Platform independent - works with PC, OS X, Linux, MAC, UNIX
- DOCSIS 1.0/1.1/2.0/3.0 compliant
- IEEE 802.3, 802.3u
- SPI Firewall meet ICASA Guidelines
- USB 2.0 Host Port

PORTS

- 4 ports 10/100/1000 MDI/MDIX auto sensing switch
- TR-68 coloring for 1 USB 2.0 Connector Type B
- TR-68 coloring for 4 Ethernet port
- Cable Interface F type female 75ohm

SOFTWARE FEATURES

- GUI display common troubleshooting information and modem status
- Full features CLI provides enhanced troubleshooting and setup
- RIPv1/2 support
- DHCP server
- Ipv6 support coexist Ipv4
- Downloadable configuration files allow for easy setup and installation.
- Universal Plug and Play (UPnP) enabling any UPnP devices seamlessly
- Quality of Services (QoS) ensure high quality performance
- SAMBA for USB Host port connection of USB hard drives
- MIB object that executes any CLI command
- GUI/SNMP/CLI addition to present PHY usage (multiple channels parameters)
- At least 4 SSIDs support with full wireless capabilities for each SSID (SSID broadcast on/off, independent encryption settings, VLAN)
- Port Forwarding
- 64/256QAM auto detection
- Independent resets for downstream and upstream blocks
- Fragmentation and concatenation enabling Quality of Server (QoS) features
- Supports 64/128/256 bit RC4 authentication and encryption
- WAN-LAN transparent bridging

NETWORK PROTOCOL

- IEEE 802.1d compliant bridging
- DHCP Client/Server
- UDP
- DNS Relay
- ToD Client
- ARP
- ICMP
- FTP/TFTP
- Telnet
- GRE
- Radius
- TACACS+
- RIP v1/2

SECURITY

- Password protected configuration access
- Stateful Packet Inspection (SPI) Firewall
- Network Address Translation (NAT)
 - Many-to-one NAT
 - Many-to-many NAT
- Application Level Gateways (ALG)
- Intrusion Detection
- Denial of Service (DoS) prevention
- Trojan Horse Prevention
- Smart Tracking
- Domain Validation
- Multiple User Profiles
- Dynamic Address-User Mapping
- Web based authentication
- Comprehensive Logging
- VPN Termination
 - IPSec
 - PPTP
 - L2TP
 - IKE
- Content and Filtering Features
- DMZ

RECEIVER

- Demodulation: 64/256QAM
- Input Frequency Range: 88MHz- 1002MHz
- Power Level Range: -15dbmV to + 15dbmV
- Bandwidth: 6MHz
 - where Alpha = 0.18 for 64 QAM
 - where Alpha = 0.12 for 256 QAM
- Input Impedance: 75ohms
- Input Return Loss: >6 dB over 88MHz - 1002 MHz

CHANNEL BONDING

- Downstream: Up to 4 channels
- Upstream: Up to 4 channels

TRANSMITTER

- Modulation:
 - TDMA: QPSK, 16QAM
 - ATDMA/STDMA : QPSK, 8QAM, 16QAM, 32QAM, 64QAM
 - SCDMA: QPSK, 8QAM, 16QAM, 32QAM, 64QAM, 128QAM
- Operating Range : 5MHz- 42MHz
- Power Level:
 - TDMA/ATDMA:
 - +17 to 57dbmV on 32QAM and 64QAM
 - +17 to +58dbmV on 8 QAM and 16QAM
- Bandwidth: 200KHz, 400KHz, 800KHz, 1600KHz, 3200KHz, and 6400KHz
- Output Impedance : 75ohms
- Output Return Loss: > 6dB

NETWORK INTERFACE

- 10/100/1000 Base-T-Ethernet
- USB2.0 Host port

REGULATORY CERTIFICATION

- FCC Part 15B Class B
- UL/cUL

DIMENSION (L x W x H)

- 10.6 x 6.1 x 1.4 in
- 26.8 x 15.5 x 3.5 cm

LEDs

- Power, DS(Downstream), US(Upstream), Online, Link, Diag, LAN (4), USB

POWER

- 12VDC

CONTACT

North America
20 Mason
Irvine, CA 92618
1-800-SMC-4YOU
24/7 Technical Support

Europe/Africa
Fructuos Gelabert 6-8
08970 Sant Joan Despí
Barcelona, Spain

Check www.smc.com for your local country contact information

© 2008 SMC Networks. SMC and the SMC logo are registered trademarks of SMC Networks in the United States or other countries. Other trademarks or registered trademarks are the property of their respective owners. Information is subject to change without notice. All rights reserved.

10/2008